

SPIDER CRANE
MC405C

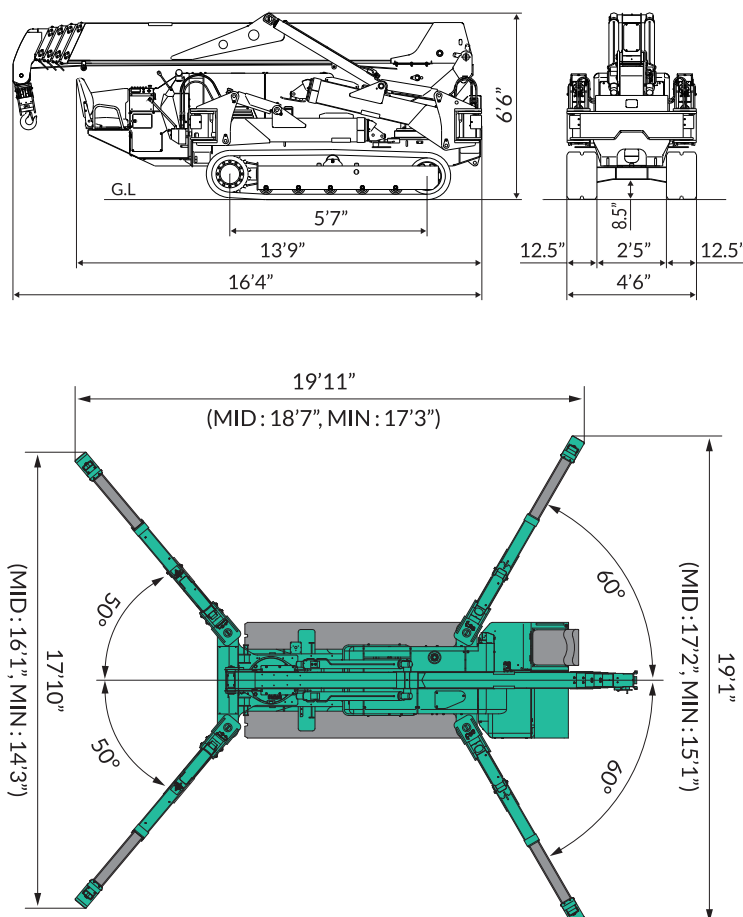
TECHNICAL DATA

Imperial(US)

Specifications

Crane Capacity	8,480lb x 8.5'
Max. Working Radius	52.4' x 500lb
Max.Lifting Height	55.1' (67.9' with fly jib)
Max. Reach Below Ground	-67.26' (4 parts of line)
Outrigger Max.Extended Width	(Lateral) 19'11" x (Front) 17'10" x (Rear) 19'1"
Travel Speed	0-2.05mph
Travel Ground Pressure (MC405CRM)	7.27PSI
Travel Ground Pressure (MC405CRME)	7.45PSI
Engine	YANMAR 3TNV88-BPMB / Diesel
Engine Rated Output	28.7hp (21.4kw)/2,400rpm
Electric Motor	7.5kw, 4P 230V
Dimensions	16'4" (L) x 4'6" (W) x 6'6" (H)
Machine Weight	12,400lb (12,700lb with electric motor) (Fly jib: +330lb)

Dimensions



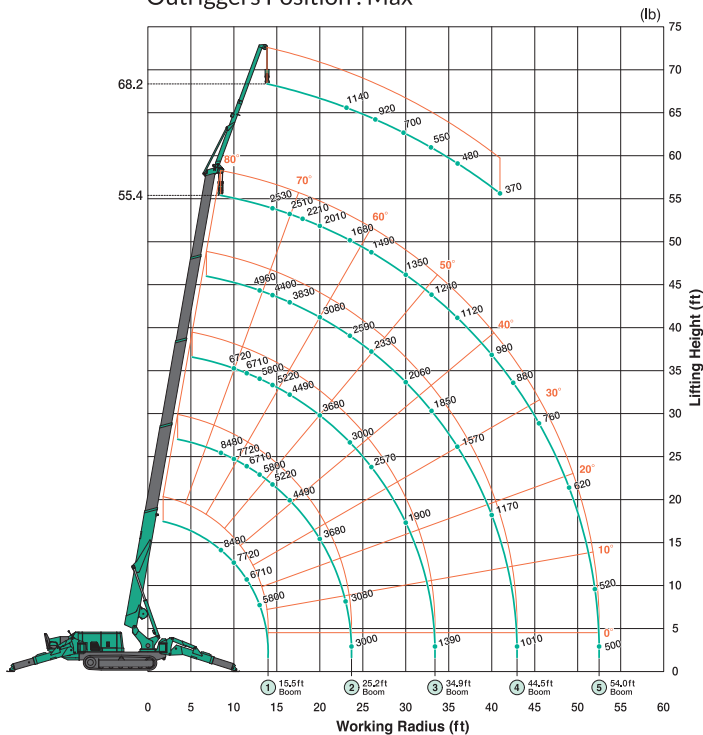
SPIDER CRANE
MC405C

TECHNICAL DATA

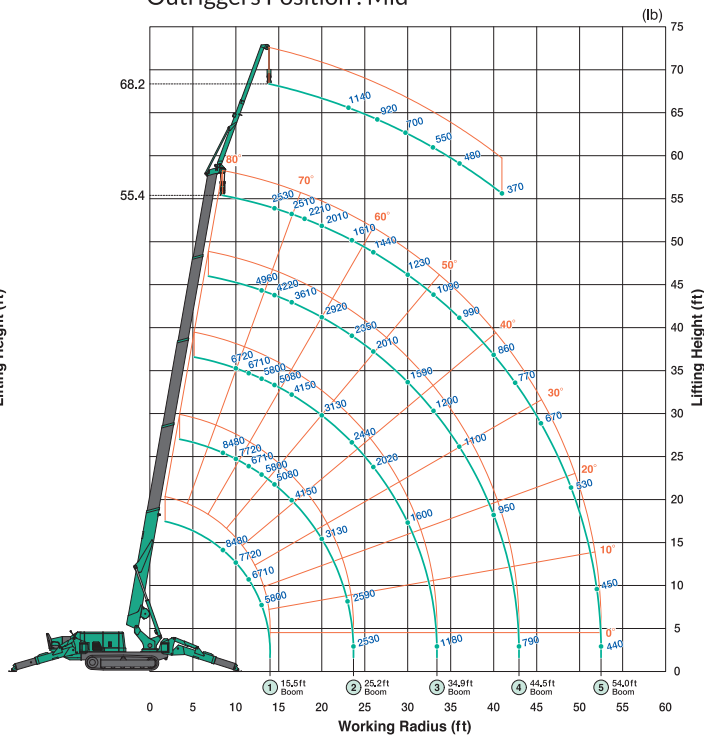
Imperial(US)

Working Range Chart

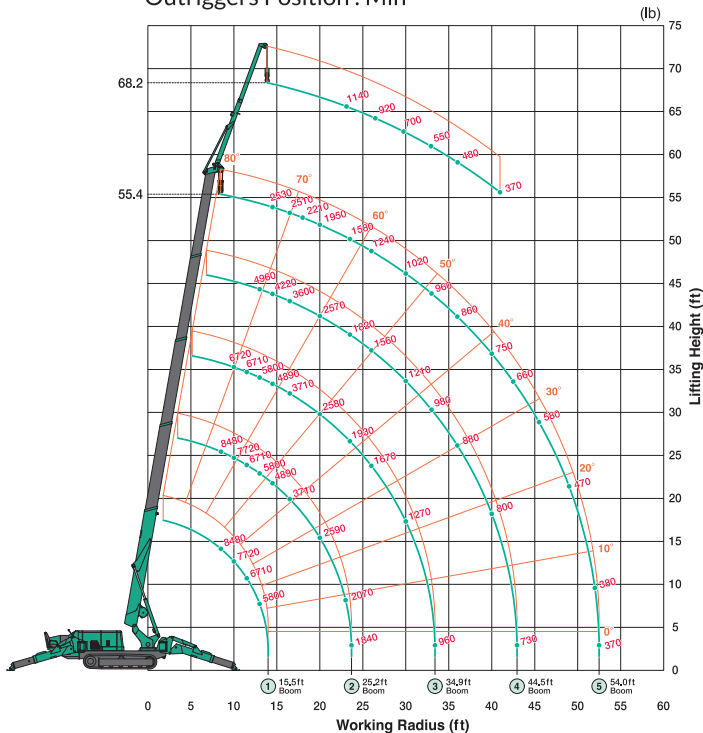
Outriggers Position : Max



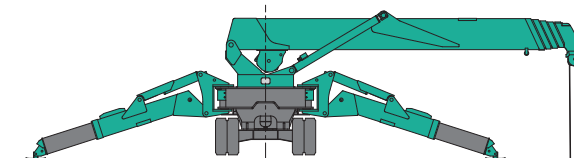
Outriggers Position : Mid



Outriggers Position : Min



Max. Below Grade



4 Parts
67'
2 Parts
138'
Single Part
269'

SPIDER CRANE
MC405C

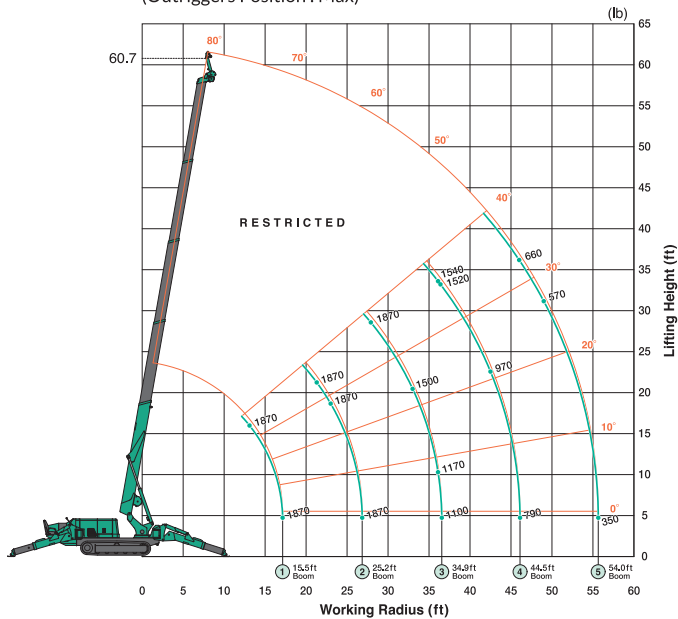
TECHNICAL DATA

Imperial(US)

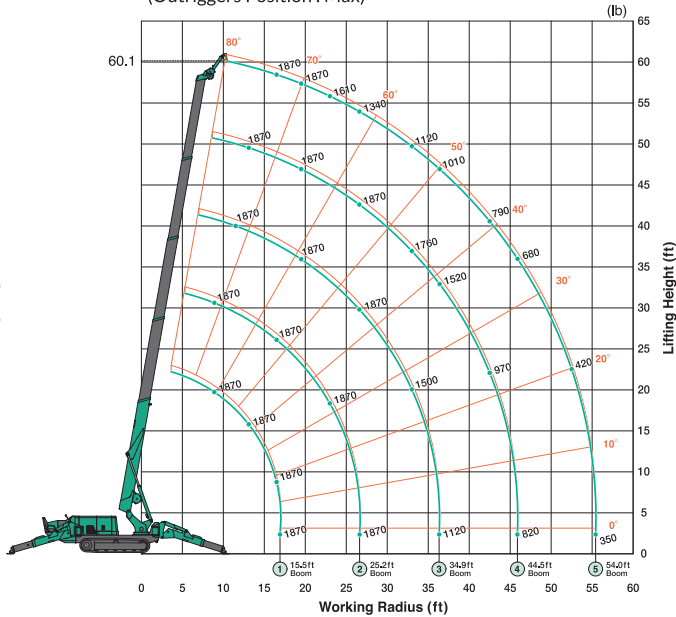
Working Range Chart

1,870lb Searcher Hook

1,870lb Searcher Hook Offset Position : SH1
(Outriggers Position : Max)



1,870lb Searcher Hook Offset Position : SH2
(Outriggers Position : Max)



1,870lb Searcher Hook Offset Position : SH3
(Outriggers Position : Max)

